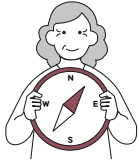


2023

Sharing Experience  
Connecting Jobs



# KORDI

Senior Employment and  
Social Activity Support Program

# CONTENTS

# KORDI, JOIN US!

04

Overview

05

Mission and Vision

06

History

Senior employment programs that utilizes the experience and capabilities of them, companies and senior employment organizations, and KORDI join together.

15

Online Community

08

Project Information

Private Sector  
Social Service  
Public Service  
Other Support Programs

# KORDI Overview

KORDI is a public institution under the Ministry of Health and Welfare, and is a senior labor force development agency dedicated to providing jobs for the aged and supporting their social activities. (Article 23-2 of the Welfare of Senior Citizens Act)  
KORDI is pushing ahead with tasks such as developing and distributing job programs for the senior, conducting research and investigations, providing education and information, and certifying and evaluating programs aimed at enabling the senior to lead vibrant and healthy lives in old age.



Head Office

106, Haneulmaeul-ro,  
Ilsandong-gu, Goyang-si,  
Gyeonggi-do



Number of employees

158 employees



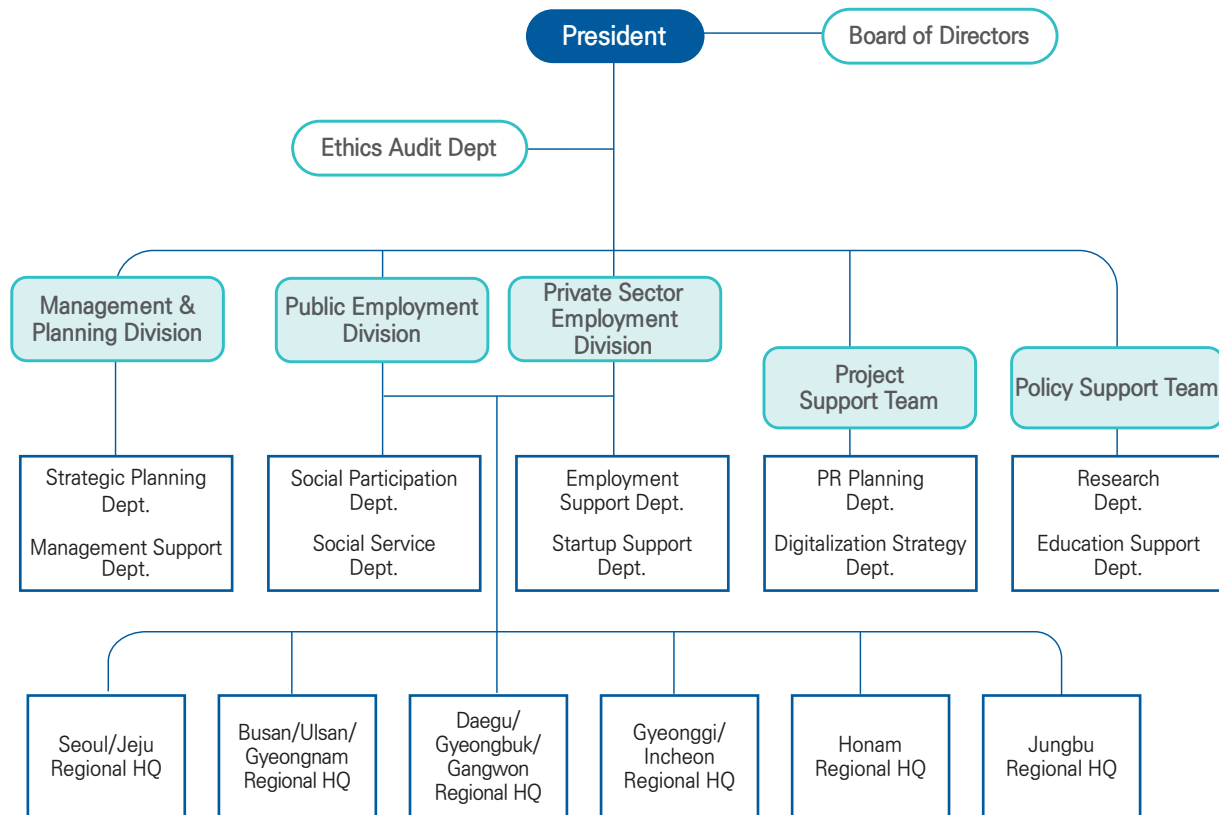
Organization

3 offices,  
2 teams, 11 departments,  
and 6 regional HQs



Job creation

883 thousand



# Mission and Vision

KORDI is working hard to create job opportunities that align with the needs of companies and society, all while showcasing the skills and abilities of 10 million senior citizens.

## Mission

Realization of a vibrant and dynamic aging society by promoting job opportunities for the senior

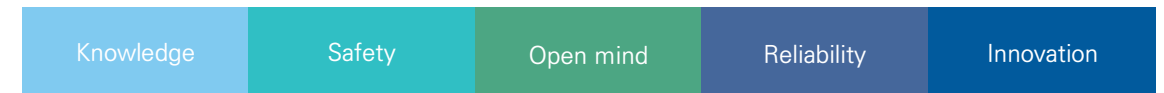
## Vision

An era of 10 million seniors, an organization leading the creation of 1 million senior jobs

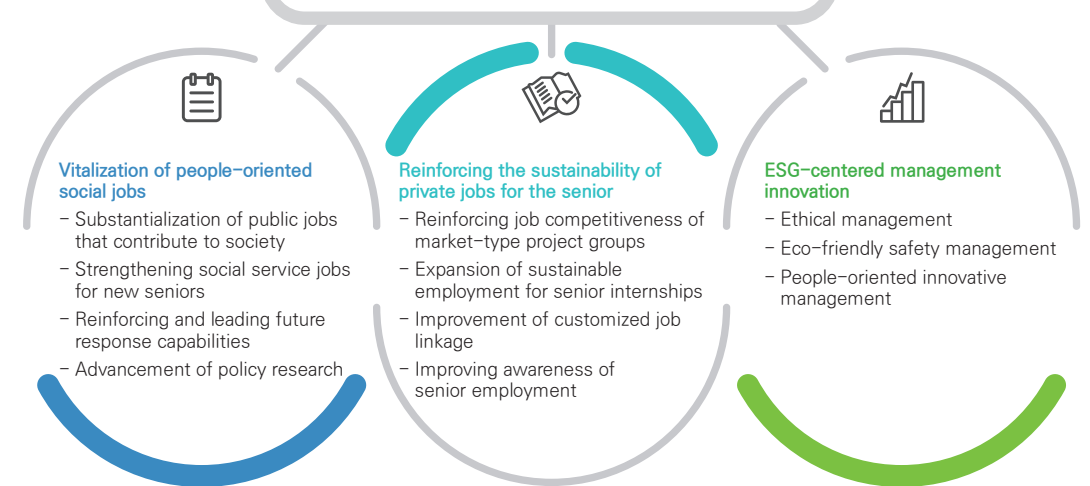
## Management Policies (WITH Safe)



## Core Values (K-SORI)

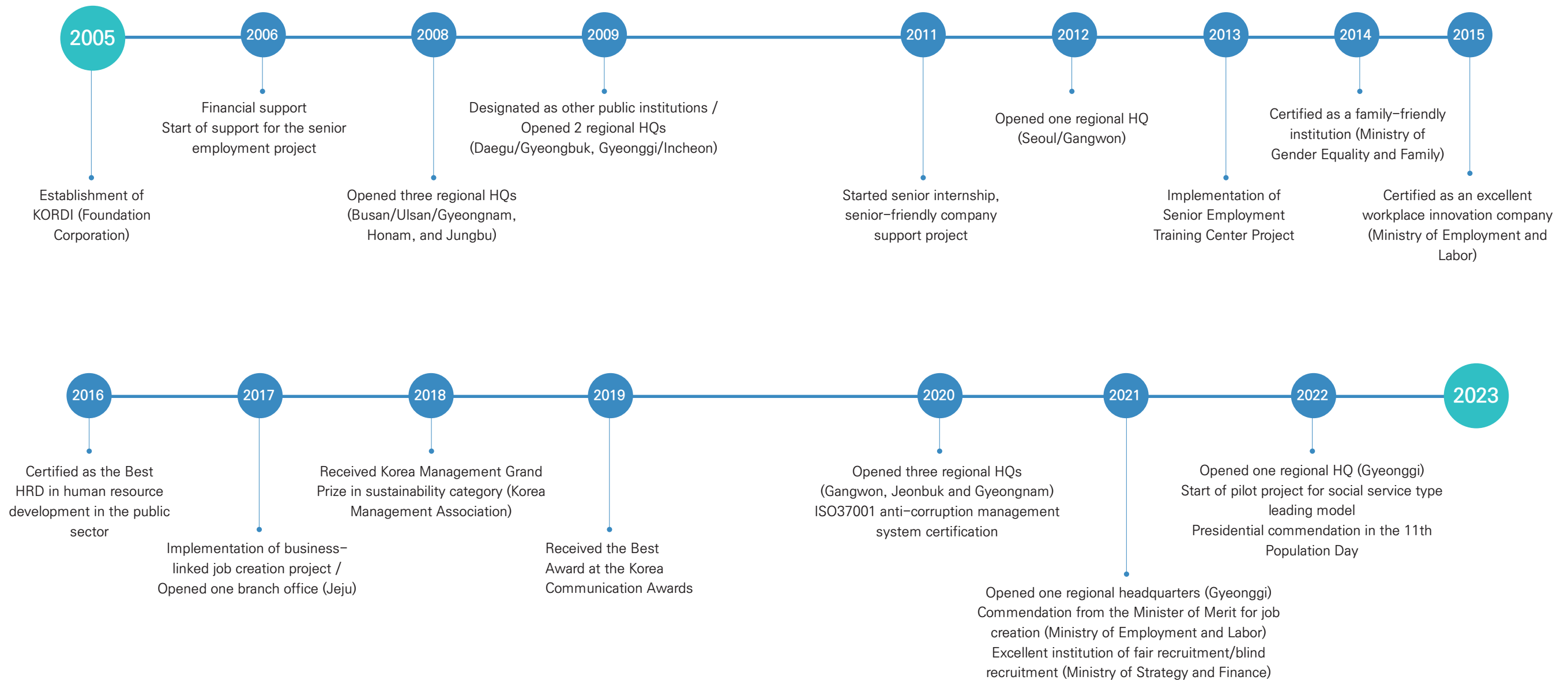


## Strategic Goals and Tasks



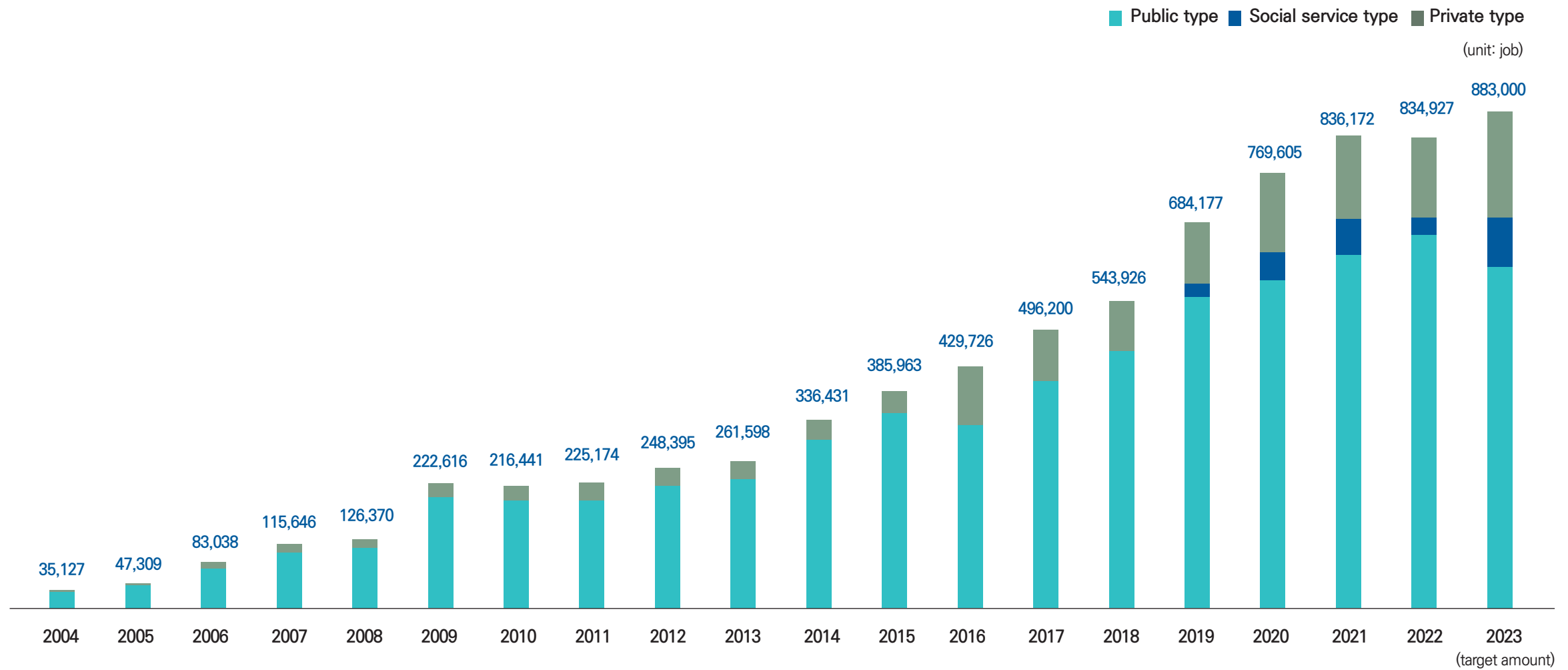
# History

## KORDI, Past Footsteps



# Introducing senior employment and Social Activity Support Program

## Annual job creation achievements for the seniors



10

Private Sector

12

Social Service

13

Public Service

14

Other Support Programs

## Together with businesses Private Sector

We support companies and business groups that employ senior workers to create more jobs in the private sector.

### Senior Internship

A project to induce new and continuous employment of the senior by subsidizing labor costs to companies to promote employment of those aged 60 years or over

**Project targets** Participating companies: Companies that comply with worker protection regulations among the 4 insurance subscribing workplaces and non-profit private organizations, etc.

Participants: aged 60 years or over

**Supports** Up to KRW 2.4 million in labor costs per person for 6 months for participating companies and institutions, additional support of up to KRW 2.8 million for long-term employment (over 18 months)

**Related inquiries** 1577-1923

### Senior-friendly Companies

A project that supports companies that hire a large number of senior citizens in occupations where people aged 60 years or over can be competitive

**Project targets** Participating companies: Companies that employ a large number of senior citizens and plan to hire additional workers.

Participants: aged 60 years or over

**Supports** Establishment subsidies of 5 million won per person (up to 300 million won per institution) and management consulting are provided

**Related inquiries** 1833-7128

### Marketable Projects Group

A project to create jobs for the senior citizens by jointly operating small stores and specialized occupational business groups among industries suitable for people aged 60 years or over

**Participation targets** Aged 60 years or over

**Work details** Food manufacturing and sales, industrial product production and sales, store operation, local farming, transportation, etc.

**Working Hours and salary** Depending on the labor contract

### Employment Placement

A project that arranges employment for seniors who have completed certain training or have work abilities by linking them to demand sources such as private companies

**Participation targets** Aged 60 years or over

**Work details** Exam supervisors, gas attendants, security guards, office managers, etc.

**Working Hours and salary** Depending on the labor contract

## Sharing experience and expertise experiences Social Service

We support seniors' experiences and capabilities to be provided in areas in need social assistance.

### Social Service Activities

Jobs that provide services in areas in need of social assistance by utilizing the experience and capabilities of seniors

**Participation targets** Aged 65 years or over (Only for some types, age 60 or older may participate)

**Work details** Home and intergenerational services, professional services for the vulnerable class, professional public services, support for senior employment and social activities for the aged, etc.

**Working time** 60 hours per month

### Social Service Leading Model (Trial Project)

Jobs that resolve social issues by utilizing the capabilities of the new seniors and external resources (human and material)

**Business Targets** Cooperating Institutions: Employers of companies/institutions, local governments and organizations that support external resources  
  
(human + material) (demanding destinations): Corporations and organizations that can provide social value among the 4 major insurance subscribing workplaces

**Supports** Up to KRW 320,000 x 5 months per senior person to participating companies and institutions (up to KRW 1.6 million per person annually)

## The benefit everyone Public Service Activities

We support seniors' continuous participation in society to contribute to a healthy and vibrant life in the elderly and create a happy society.

### Public Services

Social participation activities of seniors to promote public interest

**Participation targets** Basic pension recipients aged 65 years or over

**Activities** Elderly care by elderly, support for the vulnerable, volunteering for public facilities, bicycle racing activities

**Activity time** 30 hours per month (within 3 hours per day)

**Activity cost** 27 hours per month



## KORDI's Program

For the systematic operation of senior employment  
**Other Support Programs**

### Growth Support Projects

KORDI supports management services to strengthen market competitiveness of companies participating in private jobs for seniors, such as market-type project groups and senior-friendly companies.

### Education Projects

KORDI develops and operates training courses to strengthen the capabilities of seniors participating in senior employment and those working in implementing organizations.

### Investigation and Research Projects

KORDI promotes investments and researches related to senior employment and social participation of seniors.

### Establishment and Operation of a Comprehensive Senior Employment Information System and Database

Establishment and management of a system for efficient promotion of the projects that support senior employment and social activities

### PR Projects

Multifaceted PR to enhance the public's understanding of the senior employment policy and create an environment for creating sustainable employment for seniors

### Senior Volunteers

Showing wise senior images by activating senior volunteers so that the seniors' experience can be reinvested in society



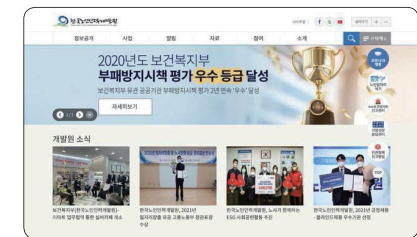
Click to get more senior job information

## Online Community

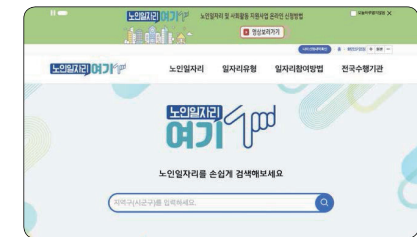
We provide senior job information through various online communities.

### Website

KORDI  
[www.kordi.or.kr](http://www.kordi.or.kr)



Here jobs for senior  
[www.seniorro.or.kr](http://www.seniorro.or.kr)



### Official SNS



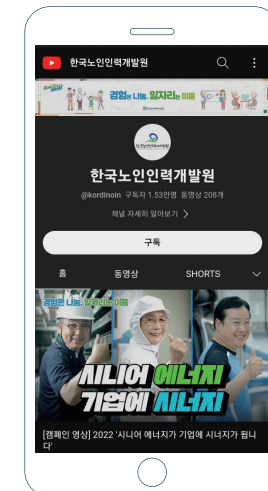
Youtube  
[www.youtube.com/user/kordinoin](http://www.youtube.com/user/kordinoin)



Instagram  
[www.instagram.com/kordi\\_kr](http://www.instagram.com/kordi_kr)



Blog  
[blog.naver.com/kordi\\_seniorjob](http://blog.naver.com/kordi_seniorjob)





# KORDI – NETWORK

## Main Institute

106 Haneulmaeul-ro,  
Ilsandong-gu,  
Goyang-si, Gyeonggi-do  
**031-8035-7511**

## Incheon Branch

10th floor, Geunyeong Plaza,  
641 Gilju-ro, Bupyeong-gu,  
Incheon  
**032-527-9221**

## Jungbu Regional HQ

7th floor, Ian Building,  
152 Cheongsa-ro,  
Seo-gu, Daejeon  
**042-476-9893**

## Sejong

### Chungbuk Branch

3rd floor, Uri Saemaul Bank Building,  
223 Osongsaengmyeong 8-ro,  
Osong-eup, Heungdeok-gu,  
Cheongju-si, Chungcheongbuk-do  
**043-715-3045**

## Jeonbuk Branch

1st floor, KT Building, 29  
Ongoeul-ro, Wansan-gu,  
Jeonju-si, Jeollabuk-do  
**063-251-0171**

## Honam Regional HQ

6th floor, SRB Building,  
324 Jebong-ro, Buk-gu,  
Gwangju  
**062-365-8815**

## Jeju Branch

5th floor, Jeju Law Tower, 1  
Namgwangbuk 1-gil,  
Jeju-si, Jeju-do  
**064-805-3079**

## Gangwon Branch

3rd floor, 2360  
Gyeongchun-ro,  
Chuncheon-si, Gangwon-do  
**033-911-3011**

## Seoul/Jeju Regional HQ

19th floor, Wise Tower, 17,  
Sejong-daero, Jung-gu, Seoul  
**02-6203-0962**

## Gyeonggi/Incheon Regional HQ

3rd floor, Gwanggyo Highness  
Building, 16, Edutown-ro  
106beon-gil, Yeongtong-gu,  
Suwon-si, Gyeonggi-do  
**031-8067-5060**

## Daegu/Gyeongbuk/ Gangwon Regional HQ

3rd floor, Daegu Techno Park,  
Daegu Venture Center, 475  
Dongdaegu-ro, Dong-gu,  
Daegu  
**053-759-1900**

## Busan/Ulsan/Gyeongnam Regional HQ

3rd floor, Juseongsan Building,  
295 Geoje-daero, Yeonje-gu,  
Busan  
**051-507-6373**

## Gyeongnam Branch

6th floor, Haegeum Science Town,  
24, Yongdong-ro 57beon-gil,  
Uichang-gu, Changwon-si,  
Gyeongsangnam-do  
**055-713-3080**